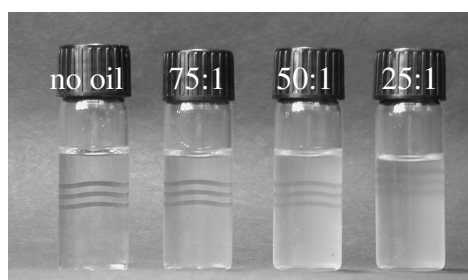


2-STROKE FUEL TEST KIT

INSTRUCTIONS FOR USE

- ① Using the pipette provided take 1ml of petrol from the carburettor float bowl & add to the test vial. *(This procedure is recommended as oil can be added to the petrol tank after engine failure.)*
- ② Replace lid & shake briefly.
- ③ The mixture will remain clear if no oil is present. The mixture will turn opaque if oil is present in sufficient quantity. *(See picture below)*



NOTES. This kit detects oil by forcing it to form bubbles. Familiarity with results will enable the user to accurately estimate the ratio of oil/petrol. It is recommended that new users test a known sample to use as a reference.



This is a disposable test & each vial & pipette should only be used once because of possible contamination. Dispose of liquid with your waste oil. Recycle glass & plastic.